

From: Colleen Peterson <colleen.peterson@outlook.com>
Sent: Wednesday, May 3, 2023 12:30 PM
To: earlhamcityhall@mchsi.com
Cc: Linda Griffith Smith
Subject: Intensive Survey

Mary Sue:

Page 2

In addition to the public meeting notice I gave you, here are a few things we are working on:

- We have a conference call with the Earlham Echo and are expecting an article to come out in next week's paper.
- We have started the site inventories in terms of architecture and description of the buildings and will be continuing that process until we have surveyed all the buildings we believe are in the defined area.
- A conference call has been scheduled with the consultant for Monday, May 8th to plan for the public meeting and he will be here on the 16th for the meeting as well as the 17th to begin the initial work.
- Additionally, we have been attending the Senior Speaker Series at Bricker Price to get word out to the general public and the public meeting notice has been either delivered or mailed to all of the property owners.

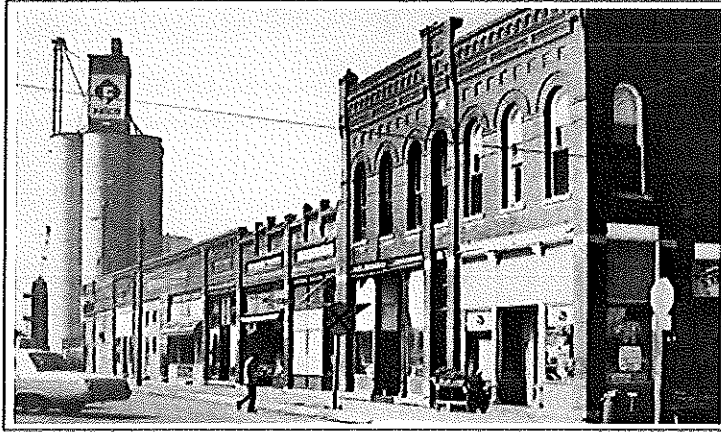
There appears to be a good amount of interest in this project with a larger than expected number of residents expressing interest in volunteering as well as sharing information and photos.

I will keep you posted on our ongoing progress.

Thanks again for all your help.

Colleen Peterson

Sent from Mail for Windows



Public Meeting to Discuss Intensive Historic Survey of the Earlham Downtown Commercial Area

Tuesday, May 16, 2023

6:00 – 7:00 pm

Earlham Community Center, Meeting Room

**All are welcome –
property owners, store managers, general public, elected officials**

This public meeting will present the work underway to survey (study) historic buildings in downtown Earlham. A building survey is much like writing a biography of a person, but instead it is the “life” of a historic building –When was it “born?” Who built it? What businesses have been inside over the years? What photos are available? Perhaps YOU know the answers to some of these questions.

This study is being done for multiple reasons. First, it will provide a historic summary of Earlham’s downtown and how it was influenced by the railroad, quarries, and agriculture. The study may result in nominating the downtown as a historic district to the National Register of Historic Places and can lead to tourism opportunities and possible grants for restoration.

This study is being undertaken by the Madison County Historic Preservation Commission, in conjunction with experts of Tallgrass Archaeology, LLC of Iowa City. Representative of both organizations will provide information and plenty of time for your questions.

We hope you come to hear more about this project and how you or others might assist.